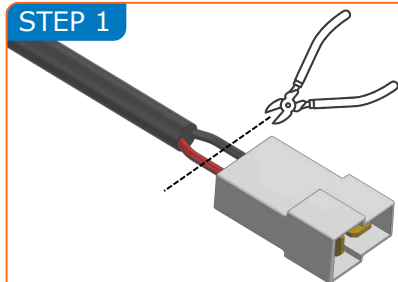


You have the option to either retain your existing OEM connector or choose to rewire your vehicles harness to use the Revotec fan connector (RTB-2). This kit provides both types of connection.

Before commencing any re-wiring, test and note the polarity of the original fan and wiring harness. The supplied fan should operate as a suction fan. Test fully before starting the vehicle engine.

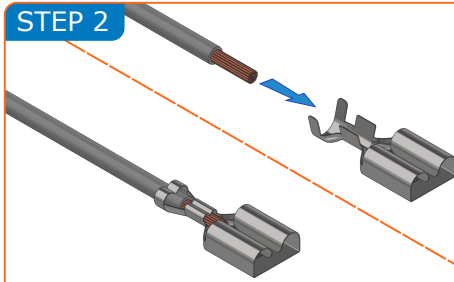
#### FAN CONVERSION TO MAZDA LOOM

##### STEP 1



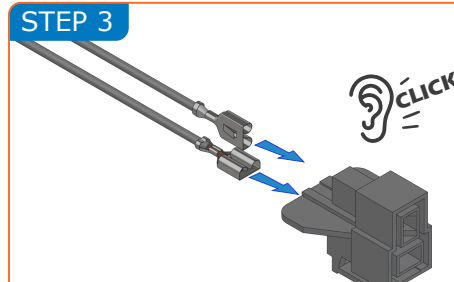
Using wire cutters, remove the white plug from the supplied fan.

##### STEP 2



Remove 1/4" (6mm) of cable shroud to reveal the wire core. Crimp the female spade connectors as shown.

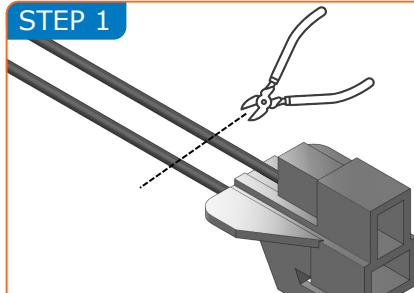
##### STEP 3



Noting the polarity, insert the crimped spade terminals into the supplied NA connector as shown. Ensure the cables are fully located - retaining catches will click into place.

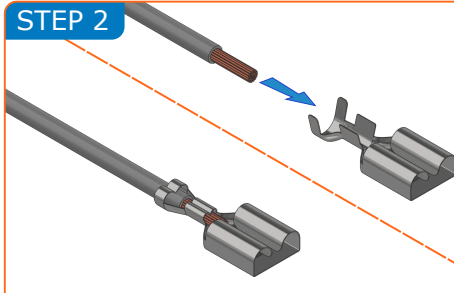
#### LOOM CONVERSION TO REVOTEC FAN

##### STEP 1



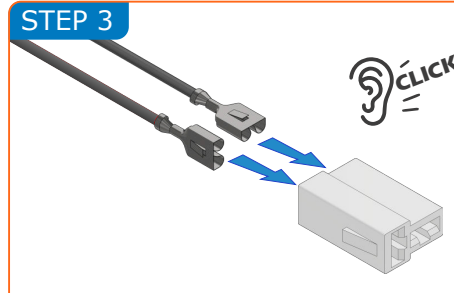
Using wire cutters, remove the male OEM black connector from the vehicle wiring loom.

##### STEP 2



Remove 1/4" (6mm) of cable shroud to reveal the wire core. Crimp the female spade connectors as shown.

##### STEP 3



Noting the polarity, insert the crimped spade terminals into the supplied RTB-2 connector as shown. Ensure the cables are fully located - retaining catches will click into place.

#### IMPORTANT NOTES

Installations are to be undertaken by a competent vehicle mechanic.  
If in doubt, consult a qualified professional.  
Always work in a safe environment and wear PPE where necessary.  
Disconnect the vehicle battery before beginning installation.  
Failure to comply with the above may result in your warranty being void.